

Welcome to KURKKUFIELDS

ENGLISH GUIDE

2023



KURKKUFIELDS MISSION

- Contributing to a sustainable society through self-governance rather than dependence
- Supporting to achieve global symbiosis through discussions and actions based on morality, and utilisation of common assets (the evenly distributed wealth under the democratic system)
- Constructing circular sustainability through renewable energy, and long-term efforts and improvements in reducing carbon emissions
- Creating various attractions to the value of humans being part of nature
- Becoming an essential platform for both cities and locals from the advantage of being so close to Tokyo, one of the megacities in the world
- As well as contributing to Kisarazu and the Bōsō Peninsula financially and as a part of disaster recovery, becoming a 'sustainable and pioneering area for future development' and fostering it with joy and pride

CHAPTER



CONCEPT



INFORMATION



SHOP LIST



FARM



EAT



ART



STAY



PLAY



SUSTAINABILITY



EXPERIENCE

CONCEPT



Humans are part of the circularity of nature.

The ‘texture’ of diverse lives,
and ‘imagination’ to care for others is essential
to restore fundamental comfort and joy,
freedom and abundance for us to live,
and to pass this on to the future.

INFORMATION

Opening times

10:00 am – 5:00 pm

Closed Tuesdays and Wednesdays (Open on public holidays)

[*Click here for the opening hours of each shop](#)

Ticket prices for Visitors

Fee Type	Adults (above12)	Children (under12)
Conservation	¥300	¥100
Entrance	¥500	¥300
Total	¥800	¥400

*Free for children under 5

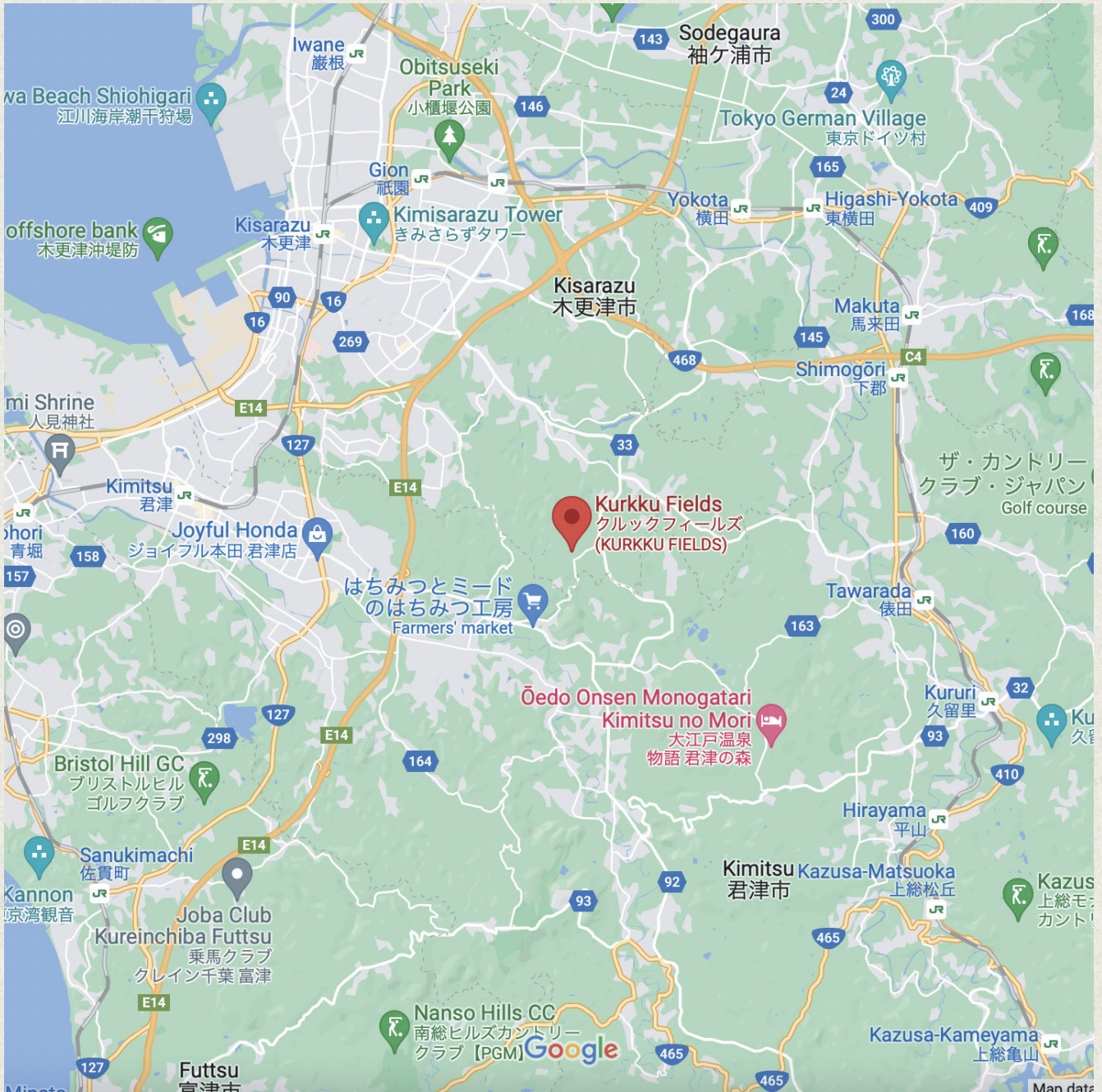
- Conservation fee -

Charged to all visitors for the maintenance of the landscape and preservation of the sustainable system of the premises.

***Parking is free for all visitors to KURKKU FIELDS**

Access

2503 Yana, Kisarazu, Chiba 292-0812



Google Map

SHOP LIST



Opening times

11:00 am – 5:00 pm

At the restaurant, 'DINING' , we offer varieties of delicacies using ingredients from the field, such as organic vegetables and herbs harvested in the garden, cured meats from our charcuterie, eggs from free-range chickens and fresh cheese from our dairy farm. Seasonal dishes are served by the chef directly to the guests in the living room feel of intimacy. (Last order 4:00 pm)



Opening times

10:00 am – 5:00 pm

When grinding golden wheat harvested on our farm, it fills the place with the pleasant aroma of wheat in its natural form. The bakery, 'Lanka' , expresses gratitude for the healthy environment and the farmers that grow wheat. The varieties of bakery products are perfect for a souvenir to take home and a little picnic snack in the field.

SHOP LIST



Opening times

10:00 am – 5:00 pm

The hams and sausages we cook and sell on-site have an irresistibly rich, juicy flavour that will leave you dazed in its delectable aroma. From the most popular wild boar burger, we create varieties of products using wild boar, pork and deer meat, and seasonal herbs harvested on the farm, exhibiting true uniqueness in taste, exclusive at the farm.



Opening times

10:00 am – 5:00 pm

At the shop on the hilltop of KURKKU FIELDS, we put our hearts into serving our speciality, chiffon cake and other desserts baked using fresh eggs and milk from the farm. From time to time, the pâtissiers take care of the cattle and chickens to enhance their connection with the farm animals. We recommend you tear the chiffon cake by hand to enjoy its light softness.

SHOP LIST



Opening times

on weekdays

10:30 am – 4:00 pm

on weekends and holidays

10:30 am – 5:00 pm

From feeding to milking the cattle, day in day out. Free-range cattle produce the finest quality of milk, especially when they are given compassionate care by the farmers. Here at the 'MILK STAND', we serve a variety of dairy products, from authentic European cheese to ice cream, at its finest quality. We recommend you take a bite of the mozzarella cheese right then and there.



Opening times

on weekends and holidays

12:00 am - 3:00 pm

The restaurant, 'perus', meaning 'essentiality' in Finnish, adjoins the accommodation housing, 'cocoon', on the hilltop with the best view to gaze over KURKKU FIELDS. Visitors can enjoy lunch courses during the daytime, and dinner courses are served for overnight guests, all using seasonal ingredients from the farm and the local area.

SHOP LIST



We recommend an overnight stay for a satisfying experience of active leisure and self-reflection. Our luxurious accommodation is the 'cocoon', located on the hilltop with a breathtaking view of the entire field. There is a kitchen lounge for guests to cook the farm crops, the restaurant 'perus', a sauna hut and many more.

BOOK HERE



The 'TINY HOUSE VILLAGE' provides an experience of a simpler and fulfilled life with vibes, something of camping and glamping. It is perfect for stargazing to BBQs and bonfires, which displays the rich connection between people and nature. Equips with showers, toilets, a bar and a living space where a rare library of book collective are available.

BOOK HERE

INFORMATION

———— Park Regulations and Policies ————

Set of rules designed to prevent injuries and damages:

- You must not bring motorcycles, tricycles, kickboards, skateboards, roller skates and others
- You must not run in the field, which includes running in skate shoes
- You must not bring or use large tents and tarps
- You must not bring any BBQ accessories
- You must not set off or throw fireworks (including sparklers)
- You must not fly any aircraft systems, such as drones
- You must not use remote control toys or any other forms of RCs
- You must not fly a kite
- You must not play with sports equipment made of hard material such as balls and frisbees
- You must not climb earthworks
- You must not enter the streams and the pond

INFORMATION

———— Park Regulations and Policies ————

Pets:

- You must register your pet as Pet Member as part of the KURKKU FIELDS Membership to bring your pet to the field. Please refer to KURKKU FIELDS Membership for more information.
- Assistance dogs are allowed

Bringing food and drinks:

- Bringing food and drinks from outside the field is generally prohibited
- Food with special dietary requirements, such as baby food and nutritional supplements, are allowed

Quarantine measures:

- You must not enter restricted areas

FAQ

Q. Is there an entrance and parking fee?

A. Since 24th November 2022, an entrance fee of ¥500 (¥300 for children under 12) and a conservation fee of ¥300 (¥100 for children under 12) is charged for all regular visitors. Members of KURKKU FIELDS will only be charged for the conservation fee to enter. [Click here](#) for more information about KURKKU FIELDS Membership.

Q. How many cars can be parked in the parking lot?

A. 350 medium and 5 large cars can fit in the parking lot. Parking is free for all visitors of KURKKU FIELDS.

Q. Can I bring my pet into the field?

A. You must register your pet as Pet Member to bring them to the field. Once the owner becomes a member of KURKKU FIELDS, they can then proceed to register their pet (dogs only) at the information desk upon arrival. The entrance fee is ¥500 per dog.

Q. Can I bring food and drinks from outside the field?

A. Please refrain from bringing food or drink. Water bottles are allowed. Please inform the staff at the information desk when bringing food with special dietary requirements, such as baby food and nutritional supplements.

FAQ

Q. Can I have picnics at KURKKU FIELDS?

A. KURKKU FIELDS is a great place for a picnic, but you must not bring food and drinks from outside the field. We recommend you get takeout food and drinks from shops in the field.

Q. Can I freely look around the field?

A. In general, we welcome you to tour the field freely. However, some areas are off-limits due to quarantine measures. Please refrain from entering those areas, such as the dairy and poultry farms. In addition, we ask for cooperation in disinfection and other health measures for events such as meeting the animal and cattle tours.

Q. Can I smoke inside the field?

A. Smoking, including electronic cigarettes, is strictly prohibited in the field. Please use the smoking area near the entrance gate before you enter.

Q. Can I use strollers or wheelchairs in the field?

A. Yes. Please note that there are some areas with unpaved passages and stairs.

Q. Can I pick plants and vegetables and take them home?

A. You must not collect plants and harvest vegetables unless during a harvesting event. Please check the 'Experience' page for more information.

FAQ

Q. Can I bring home the living species, such as insects, found in the field?

A. You must not collect living species to take back home from the field due to the environmental protection policy.

Q. Can I use outdoor sports toys such as balls and frisbees in the field?

A. You can use sports equipment in the CREATIVE PARK area.

However, sports equipment made of hard material, such as baseballs and soccer balls, is not allowed as it may harm other guests. Sports equipment made of soft materials is allowed, but we kindly ask you to be aware of your surroundings and other guests.

Q. Can I bike or skateboard in the field?

A. Strider Balance Bikes for young children are allowed. However, other types of vehicles, such as electric bikes and skateboards, are strictly prohibited.

Q. Can I play a musical instrument in the field?

A. Unless you are an authorized musician performing at one of the music events, you must not play any musical instruments. There are installations related to sounds in the field.

FARM

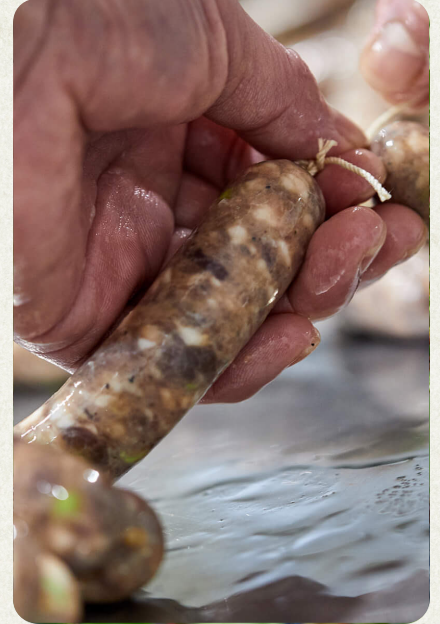
Blessings of nature, beginning from the sun



With the foundation of organic farming, edible gardening, dairy farming, cheesemaking and poultry farming, the 'FARM' content illustrates the circularity of the environment involving the sun, blessing of nature, soil, water and all living organisms. Farmers of KURKKU FIELDS cultivated the crop field for many years, from clearing the land to building healthy soil using nutrition composted from poultry and dairy farming excrements. The crop field, spanning an area of 7 hectares, grows various organic vegetables, and now we have acquired the 'JAS certification' , an ecolabel awarded for good quality agricultural produce. From free-range Brown Swiss cattle, chickens, baby goats and lambs, you can experience the coexistence of nature and humans through feeling the gift of 'life'.

EAT

An exclusive treat to savour freshly harvested ingredients



The food scene in KURKKU FIELDS offers a luxurious variety of organic delicacies that nature provides. The restaurant, 'DINING' , has a living room feel of intimacy with the kitchen connected to the dining hall. You can also dine at 'perus' , another restaurant with a breathtaking view from the hilltop. Meanwhile, the 'CHARCUTERIE' serves our original hams and sausages using the meat of wild boar, pork and deer, and fresh herbs and vegetables from the farm, paired with the exquisite selection of wine and beer. You can purchase bakery products made using the golden wheat harvested from our organic farm at the bakery, 'Lanka' . 'CHIFFON' serves our speciality, chiffon cake and the 'MILK STAND' serves a variety of dairy products, from handmade mozzarella cheese to ice cream made using the milk from the cattle in KURKKU FIELDS.

ART

The source of imagination and creativity



Art, evoking a wide range of senses from the microscopic world to the universe, is the source of our innate imagination and creativity as humans. Numerous art pieces, some interactive, are scattered all around KURKKU FIELDS: art pieces by Yayoi Kusama, David Hockney, Camille Henrot, Sebastian Masuda, Fabrice Hybert, Chim ↑Pom from Smappa!Group and Anish Kapoor, to name a few. These collections are carefully selected to align with our concept of circularity. KURKKU FIELDS displays these art pieces to stimulate imagination that we often forget to use in city life, unveiling the overflowing enrichment of circular, organic interconnection that forms a one-planet world where everything is in harmony. Feel free to look around our curated artwork that expresses harmony and balance between humans and nature.

STAY

A sustainable accommodation to indulge in nature

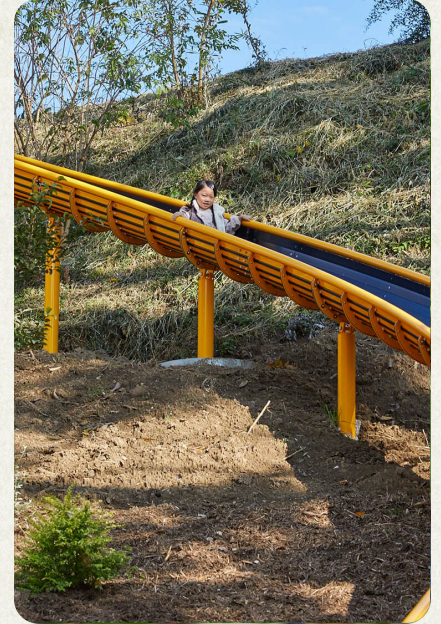


KURKKU FIELDS provides two types of accommodation for guests to enhance mindfulness and achieve well-being. To experience a simple and fulfilled life, we recommend the ‘TINY HOUSE VILLAGE’ . Deriving from tiny trailer houses in Portland, Oregon, we offer this camp-feeling accommodation to those who like BBQs and bonfires. The neighbouring ‘CENTER HOUSE’ equips with showers, toilets, a bar and a living space where a rare library of book collective is available for reading. Our luxurious option is the ‘cocoon’ , located on the hilltop with a breathtaking view of the entire field. There is a kitchen lounge for guests to cook the farm crops, the restaurant ‘perus’ , a sauna hut and many more. Through these experiences, we aim to put forward ideas for a sustainable and healthy lifestyle in the future.

BOOK HERE

PLAY

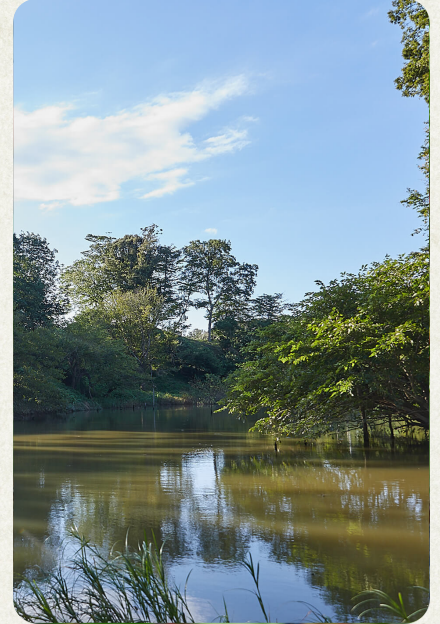
Taking a deep breath amid in greenery



The 'CREATIVE PARK' offers an interactive play park with various activities for both adults and children: tall swings made of local bamboo where you feel like you can almost touch the sky, a giant slide that takes you on a journey through the forest, colourful seesaw and bridges that tickles your imagination made of recycled materials, the yellow school bus with a playful interior such as a little maze for kids and a driver seat that takes you back to your childhood, and many more. In addition, a spacious grassland is a perfect place for a game of frisbee, meditation, picnic and other outdoor activities while feeling the scent of the flowers and mother nature. The sky' s the limit. We invite you to explore ways to enjoy yourself and take a deep breath to soothe your soul.

SUSTAINABILITY

The realisation of sustainability



The abundance of the diversified ecosystem is rare, especially when closer to the city. In KURKKU FIELDS, we present a sustainable system of ‘energy’ , ‘soil’ and ‘water’ . With the combination of the ‘SOLAR FARM’ and battery storage, we generate an off-grid power system. The compost house turns kitchen waste and cattle excrement into compost and reduces waste. Past the ‘BIO GEO FILTER’ – where the organic matter in wastewater becomes nutrition for plants and other living species – is the ‘MOTHER POND’ , located at the heart of KURKKU FIELDS. The surrounding wild forest presents us with jaw-dropping scenery and blessings of natural resources for firewood and edible wild plants. You can feel the circularity of nature, where everything is interconnected to form a single ring.

EXPERIENCE

An experience beyond compare in rich nature



At KURKKU FIELDS, we offer a variety of unique events and experiences like none other. Events such as BBQs and pizza making with harvesting experience offer plans for you to enjoy the creation of the field and the local meat and fish. ‘KURKKU FIELDS TOUR’ is a popular tour where our trained staff members will take you on an expedition through the wonders of sustainability and the art of food within the farm park. There are also events where you can meet the animals, from cattle to baby goats and lambs. The outdoor festival, ‘HARVEST’ , is a prominent event where people gather to embrace the seasonal blessings of nature with all human senses. Here, we offer a variety of content, such as delicacies using seasonal products, workshops for both adults and children and live performances by musicians on the outdoor stage.